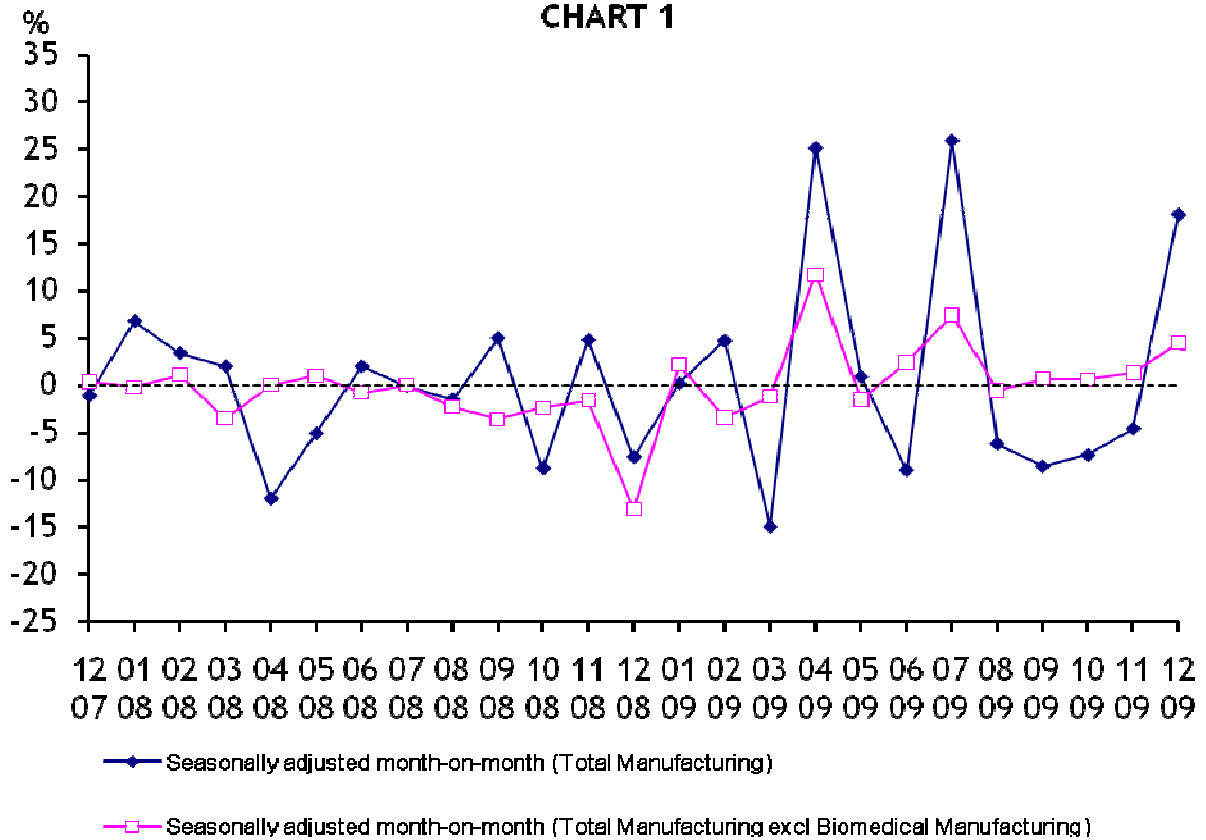
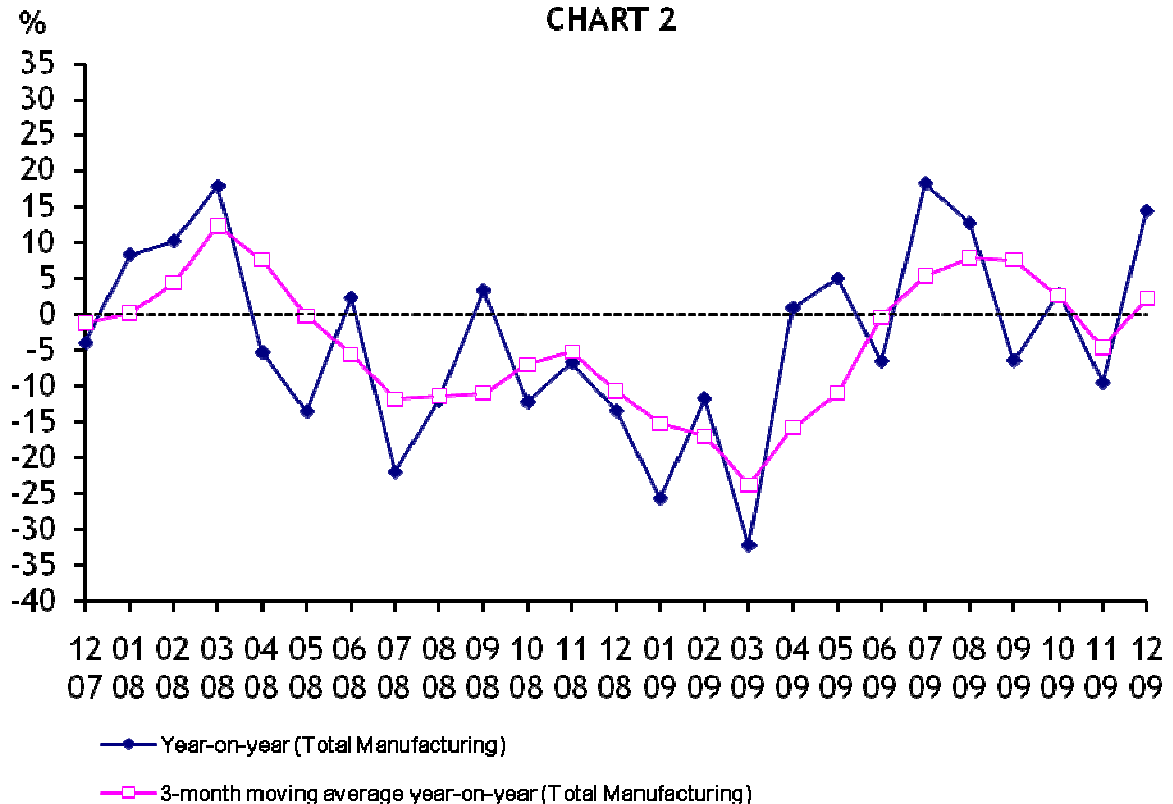


# GROWTH OF MANUFACTURING SECTOR

## CHART 1



## CHART 2



**TABLE 1 : MANUFACTURING SECTOR GROWTH**

Period		NSA INDEX Total Mfg ( 2007 = 100 )	YOY GROWTH (%) Total Mfg	SA INDEX Total Mfg	SA MOM GROWTH (%) Total Mfg	SA INDEX Total Mfg excl Biomedical Mfg	SA MOM GROWTH (%) Total Mfg excl Biomedical Mfg
2007	Dec	101.1	-4.0	97.6	-1.1	102.5	0.4
2008	Jan	100.7	8.3	104.2	6.8	102.3	-0.2
	Feb	96.0	10.2	107.7	3.4	103.4	1.1
	Mar	116.6	17.8	109.9	2.0	99.8	-3.5
	Apr	91.8	-5.3	96.7	-12.0	99.8	0.0
	May	85.5	-13.5	91.8	-5.1	100.8	1.0
	Jun	98.1	2.3	93.6	2.0	100.0	-0.8
	Jul	93.3	-21.9	93.5	-0.1	100.0	0.0
	Aug	91.2	-12.0	92.1	-1.5	97.7	-2.3
	Sep	103.2	3.3	96.7	5.0	94.2	-3.6
	Oct	90.9	-12.2	88.2	-8.8	91.9	-2.4
	Nov	95.0	-6.7	92.4	4.8	90.4	-1.6
	Dec	87.6	-13.4	85.4	-7.6	78.6	-13.1
2009	Jan	74.9	-25.6	85.6	0.2	80.3	2.2
	Feb	84.8	-11.7	89.6	4.7	77.6	-3.4
	Mar	79.2	-32.1	76.2	-15.0	76.7	-1.2
	Apr	92.6	0.9	95.3	25.1	85.7	11.7
	May	89.8	5.0	96.2	0.9	84.4	-1.5
	Jun	91.7	-6.5	87.5	-9.0	86.4	2.4
	Jul	110.3	18.2	110.2	25.9	92.8	7.4
	Aug	102.8	12.7	103.4	-6.2	92.2	-0.6
	Sep	96.6	-6.4	94.5	-8.6	92.8	0.7
	Oct	93.4	2.8	87.5	-7.4	93.4	0.6
	Nov	86.0	-9.5	83.5	-4.6	94.6	1.3
	Dec*	100.2	14.4	98.6	18.1	98.9	4.5

Note:

- \* - Preliminary
- NSA Index - Non seasonally adjusted index
- MOM - Month-on-month
- YOY - Year-on-year

**TABLE 2: PERFORMANCE BY CLUSTERS**

Industry Cluster	2008 Value Added Share (%)	% change over corresponding period of previous year				% change of 3-month moving average over corresponding period of previous year		
		Oct 09	Nov 09	Dec 09*	Cum Jan - Dec 09	Oct 09	Nov 09	Dec 09*
<b>Electronics</b>	26.3	16.3	13.9	57.3	-8.6	4.8	10.5	27.3
Semiconductors	16.4	13.5	29.7	90.8	-6.2	0.6	12.2	40.0
Computer Peripherals	2.6	82.9	-0.4	10.2	12.6	67.1	46.7	29.0
Data Storage	3.2	-14.9	-16.2	42.6	-23.2	-23.3	-17.4	-0.1
Infocomms & Consumer Electronics	2.5	-18.4	0.8	6.5	-35.1	-26.6	-19.0	-4.3
Other Electronic Modules & Components	1.6	-1.7	1.1	23.5	-19.4	-4.9	-2.5	6.4
<b>Biomedical Manufacturing</b>	22.2	0.3	-48.9	-13.3	11.5	22.1	-24.2	-24.2
Pharmaceuticals	19.7	-0.8	-52.6	-16.3	12.3	23.6	-26.9	-27.4
Medical Technology	2.5	10.0	12.7	22.4	1.7	5.3	10.6	15.2
<b>Chemicals</b>	10.2	-2.2	16.6	27.7	-8.8	-5.2	1.0	13.0
Petroleum	0.2	-17.0	-12.1	-10.0	-14.8	-16.5	-15.1	-13.1
Petrochemicals	5.3	11.5	50.9	62.2	-1.9	7.9	17.2	38.8
Specialties	3.8	6.3	35.1	72.7	-8.2	-3.8	8.3	33.7
Others	0.9	3.3	25.2	28.4	-5.0	1.7	7.7	18.2

**TABLE 2: PERFORMANCE BY CLUSTERS (Continued)**

Industry Cluster	2008 Value Added Share (%)	% change over corresponding period of previous year				% change of 3-month moving average over corresponding period of previous year		
		Oct 09	Nov 09	Dec 09*	Cum Jan - Dec 09	Oct 09	Nov 09	Dec 09*
<b>Precision Engineering</b>	14.0	-2.3	5.8	14.7	-15.0	-9.6	-3.8	6.0
Machinery & Systems	6.5	-0.8	1.9	8.1	-15.1	-9.5	-5.8	3.3
Precision Modules & Components	7.5	-3.5	9.5	22.4	-14.9	-9.8	-2.1	8.4
<b>Transport Engineering</b>	16.1	-16.3	-19.4	-14.8	-5.6	-10.2	-14.7	-16.8
Marine & Offshore Engineering	9.3	-20.3	-24.6	-21.8	-6.2	-13.0	-18.5	-22.3
Aerospace	5.8	-14.2	-16.6	-21.1	-3.8	-9.3	-12.5	-17.5
Land	1.0	2.3	11.4	117.3	-12.0	7.2	3.1	40.0
<b>General Manufacturing Industries</b>	11.2	0.8	2.4	2.1	-4.8	-2.3	0.0	1.7
Printing	2.9	-6.6	-2.2	-0.1	-14.6	-11.0	-7.5	-3.1
Food, Beverages & Tobacco	2.8	-2.8	-5.8	-6.4	-4.7	-3.1	-2.9	-5.0
Miscellaneous Industries	5.4	5.8	8.7	7.8	0.0	1.9	4.7	7.4
<b>Total Manufacturing</b>	100.0	2.8	-9.5	14.4	-4.1	2.6	-4.6	2.2
<b>Manufacturing excluding Biomedical Manufacturing</b>	77.8	3.3	5.7	23.9	-8.7	-2.2	1.4	10.6

\* Preliminary

TABLE 3: MONTHLY INDEX OF INDUSTRIAL PRODUCTION BY INDUSTRY CLUSTER, DECEMBER 2007 TO DECEMBER 2009

Period		Electronics					Biomedical Manufacturing			Chemicals					
		Total	Semi-conductors	Computer Peripherals	Data Storage	Infocomms & Consumer Electronics	Other Electronic Modules & Components	Total	Pharmaceuticals	Medical Technology	Total	Petroleum	Petrochemicals	Specialties	Others
2007 = 100															
2007	Dec	111.4	107.1	118.4	123.1	110.2	112.3	80.5	79.2	97.5	100.9	103.7	103.7	96.5	90.6
2008	Jan	100.4	99.5	126.0	110.7	64.7	108.3	101.6	101.8	98.6	104.3	102.8	103.4	110.9	94.7
	Feb	94.2	103.0	93.4	95.8	57.7	96.8	115.1	116.6	96.0	96.7	98.5	94.4	101.9	80.8
	Mar	97.1	90.4	116.1	118.9	76.5	119.7	168.1	173.9	95.5	104.0	104.5	103.3	109.4	88.5
	Apr	91.7	97.3	95.3	103.4	52.0	97.1	74.5	71.8	109.2	102.4	101.8	102.4	107.4	90.4
	May	86.5	88.8	95.4	95.0	52.5	100.0	53.0	49.7	94.4	103.7	107.5	103.0	106.0	81.0
	Jun	98.6	103.7	109.9	92.0	67.2	110.1	86.6	84.5	112.5	100.8	101.2	95.8	110.1	89.7
	Jul	101.3	115.7	95.8	99.6	49.1	104.3	60.5	58.2	88.8	98.6	101.0	89.6	106.5	96.3
	Aug	96.9	105.0	98.2	112.2	46.4	105.1	70.1	68.8	85.9	94.9	101.5	83.6	101.9	84.4
	Sep	100.9	105.1	111.2	111.0	57.5	115.6	103.2	103.8	96.4	99.4	98.4	98.4	105.6	90.1
	Oct	93.1	102.2	93.3	96.6	46.6	106.6	72.6	70.6	98.3	94.3	102.7	89.4	91.7	80.6
	Nov	83.6	84.5	106.5	93.9	39.9	98.2	115.0	117.0	90.1	80.2	96.5	69.2	71.4	69.8
	Dec	71.7	70.6	101.3	69.0	42.0	80.8	97.4	96.9	103.7	77.5	95.3	69.0	61.9	70.8
2009	Jan	58.2	62.6	77.2	54.9	25.0	51.0	87.4	87.8	82.1	79.1	94.6	73.0	68.7	59.0
	Feb	61.8	60.2	91.8	73.3	29.5	53.6	123.8	126.4	90.3	76.1	85.6	69.0	71.9	70.5
	Mar	65.0	70.5	78.8	60.5	34.9	57.3	82.0	80.3	102.5	81.0	85.5	77.1	80.2	76.5
	Apr	73.2	78.5	81.1	85.0	33.9	69.6	124.2	126.2	99.3	80.5	79.0	82.8	85.4	65.5
	May	68.2	75.5	74.7	63.2	29.8	80.6	126.7	129.5	91.8	84.6	88.9	78.0	89.0	74.9
	Jun	81.7	87.1	102.8	80.6	39.2	82.3	102.2	102.4	99.5	91.1	88.7	86.5	101.4	88.9
	Jul	98.5	100.3	168.4	80.2	35.6	96.9	156.7	161.2	99.5	96.2	87.5	105.4	99.6	92.8
	Aug	93.7	96.3	155.8	74.7	33.9	98.2	138.5	143.0	82.0	90.5	85.0	96.0	93.2	87.9
	Sep	103.0	101.9	179.4	88.2	38.5	108.4	88.9	87.6	105.3	90.9	82.7	97.0	97.1	88.4
	Oct	108.3	116.0	170.6	82.2	38.0	104.8	72.8	70.0	108.1	92.3	85.2	99.7	97.4	83.2
	Nov	95.2	109.6	106.1	78.7	40.2	99.3	58.8	55.4	101.5	93.6	84.8	104.4	96.4	87.4
	Dec *	112.8	134.7	111.7	98.3	44.7	99.7	84.4	81.1	126.9	99.0	85.8	112.0	106.8	90.9

TABLE 3: MONTHLY INDEX OF INDUSTRIAL PRODUCTION BY INDUSTRY CLUSTER, DECEMBER 2007 TO DECEMBER 2009 (Continued)

Period	Precision Engineering			Transport Engineering				General Manufacturing Industries				Total Manu- facturing	Manufacturing excluding Biomedical Manufacturing	
	Total	Machinery & Systems	Precision Modules & Components	Total	Marine & Offshore Engineering	Aerospace	Land	Total	Printing	Food, Beverages & Tobacco	Miscella- neous Industries			
2007 = 100														
2007	Dec	105.6	121.5	92.2	110.6	122.9	97.3	104.3	100.1	98.3	101.1	100.5	101.1	107.3
2008	Jan	97.2	94.4	99.5	93.7	89.7	99.0	90.0	107.5	101.3	120.4	104.5	100.7	100.4
	Feb	80.8	79.6	81.9	90.7	89.6	89.6	106.0	80.6	79.7	89.1	77.0	96.0	90.3
	Mar	102.9	111.9	95.2	109.7	106.7	105.1	159.2	99.5	100.6	105.2	96.2	116.6	101.2
	Apr	94.7	93.5	95.7	103.7	104.1	102.6	108.1	102.2	99.7	105.0	102.2	91.8	97.0
	May	92.5	94.2	91.0	107.4	114.1	102.2	91.2	102.0	100.9	105.5	100.9	85.5	95.2
	Jun	99.5	107.4	92.7	113.3	117.7	108.3	113.3	101.3	97.7	105.4	101.1	98.1	101.5
	Jul	96.1	93.7	98.2	116.4	123.3	105.6	133.7	108.7	100.4	110.2	112.2	93.3	103.1
	Aug	91.1	87.3	94.2	102.2	101.0	105.8	88.9	106.0	98.6	108.9	108.5	91.2	97.5
	Sep	103.3	110.2	97.5	109.7	115.7	103.5	104.8	108.3	99.0	107.4	113.6	103.2	103.2
	Oct	87.4	83.2	91.0	108.4	111.8	105.7	100.4	107.0	97.7	109.3	110.6	90.9	96.4
	Nov	81.8	85.4	78.7	111.8	120.5	105.5	88.2	102.7	95.7	110.1	102.6	95.0	89.0
2009	Dec	83.2	97.3	71.2	117.9	122.2	118.9	81.7	101.2	88.6	116.2	100.5	87.6	84.7
	Jan	62.2	63.6	61.1	98.1	104.7	95.2	69.2	85.5	71.6	100.9	85.2	74.9	71.2
	Feb	64.2	64.8	63.7	106.4	108.0	106.6	93.7	80.6	71.8	91.6	79.9	84.8	73.2
	Mar	75.3	80.7	70.8	109.9	108.0	116.0	86.1	88.0	80.1	101.6	85.5	79.2	78.4
	Apr	72.1	76.9	68.0	118.5	133.7	110.4	59.3	93.4	79.8	97.9	98.1	92.6	83.2
	May	71.0	69.7	72.2	98.3	99.2	103.3	60.9	93.7	77.3	101.2	98.6	89.8	78.8
	Jun	83.6	88.8	79.2	101.0	100.0	105.8	78.7	100.6	78.2	102.9	111.0	91.7	88.6
	Jul	78.8	75.1	82.0	102.8	109.7	99.5	73.9	104.5	86.8	107.4	112.2	110.3	96.4
	Aug	79.1	78.7	79.5	96.5	92.7	98.5	111.0	100.9	85.8	101.7	108.3	102.8	92.1
	Sep	90.1	92.9	87.7	100.4	103.7	96.5	101.6	105.1	85.8	107.4	113.8	96.6	98.9
	Oct	85.4	82.6	87.8	90.8	89.2	90.7	102.7	107.8	91.3	106.3	117.0	93.4	99.6
	Nov	86.5	87.0	86.1	90.1	90.9	88.0	98.2	105.1	93.6	103.8	111.6	86.0	94.1
Dec *	95.4	105.1	87.2	100.5	95.6	93.7	177.6	103.4	88.5	108.8	108.4	100.2	104.9	

\* Preliminary